

You are in the Cotton Exchange. This building is used as office space to different businesses and workers from Merseyside. The building was built as a place to buy and sell cotton from all over the world in Liverpool.

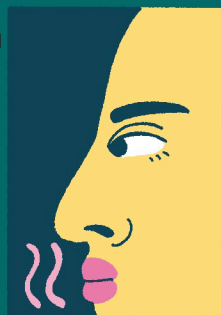
Here you will find artworks by Lungiswa Gqunta, Sepideh Rahaa & Shannon Alonzo. Their works are about family knowledge that has been passed down through generations. This sheet gives you more information about the artists and things to think about when looking at the artworks.

Lungiswa Gqunta's pools are inspired by beds and her space is dark.

Lungiswa has added smell to her artwork because it reminds her of her childhood.

How do you feel coming in and out of the space, can you think of any other times you travel between dark and light spaces?

What do you think the smell is? What smells remind you of your neighbourhood?



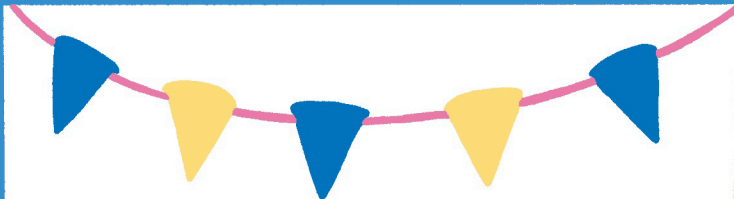
Sepideh's work looks at traditional farming and how knowledge of plants and how to grow them is passed between parents and children. Tell your grown up a piece of advice given to you by an elder or an older member from your community. Do you have advice for them?



Shannon's work is linked with carnival and parties. Show your grown-up your favourite dance move. See if they will show you theirs.

You are in The Bluecoat, the oldest building in Liverpool City Centre. Currently used as an arts centre it was first used as a charity school for poor children.

Here you will find artworks by Raisa Kabir, Kent Chan, Benoît Piéron, Nicholas Galanin. The artworks are about play and childhood but also the history of tools used for work. This sheet gives you more information about the artists and things to think about when looking at the artworks.



Benoît spent a lot of his childhood in hospital, and reflects on these experiences in his art. His three friendly bats are made from fabrics found in hospitals.

If you could make an animal out of bedsheets, what animal would you make and why?



Kent works with items from museums that have been taken from tropical locations in Asia.
Which countries can you think of that are tropical?

Raisa is interested in weaving and she uses lots of different materials to make patterns.

Can you trace these patterns in the air?



Nicholas' film shows him saying loving things to his son in his own language.
Create an affirmation for yourself to remind you of how important you are.

Have you heard Nicholas' language before?

What languages do you hear in your community?

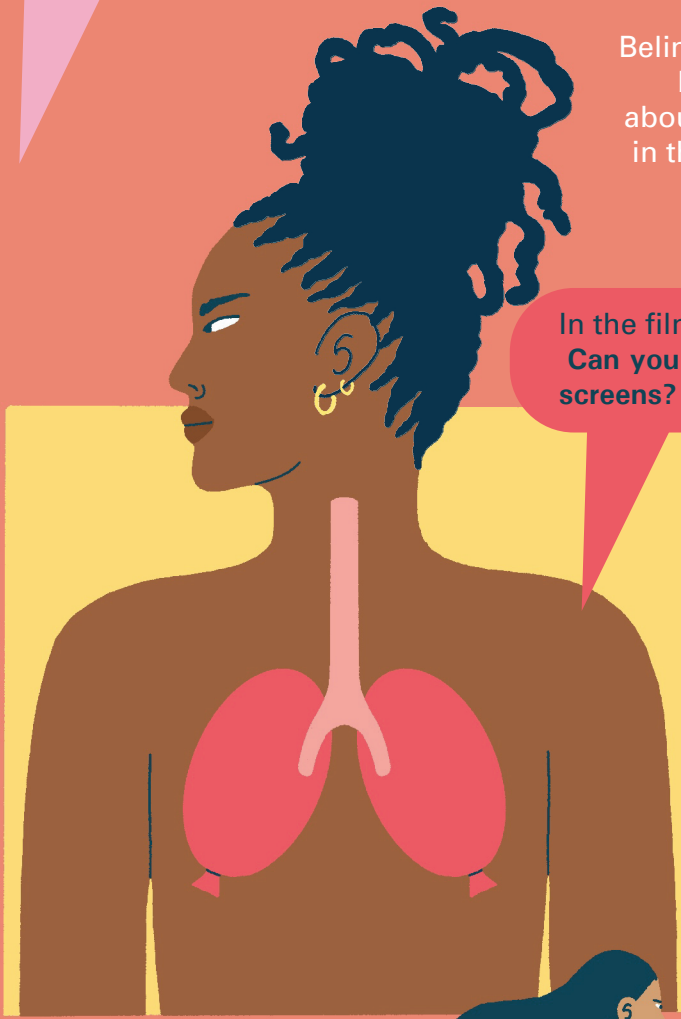
Where in the world do these languages come from?



FACT is an art gallery working with artists and communities to mix art and technology. This sheet gives you more information about Belinda and things to think about when looking at her work.

Belinda Kazeem-Kamiński is interested in thinking about breathing and breath. Belinda wants people to think about how easy it is to breathe and how people breathe in their day-to-day life. Belinda has worked with people from Liverpool who use their breath as part of their work or hobbies.

In the films people are breathing in and out of a balloon. Can you match your breathing to one of the people on the screens? How does this make you feel?



Listen to the sounds in the space. Belinda worked with another artist called Bassano to record the sounds and rhythms of Liverpool.

Which sounds can you hear?
What sounds do you think of when you think of Liverpool?



The Pan-African flag is important to Belinda, the colours are, Red: the blood connects all the people of African ancestry. Black: for the people themselves
Green: symbolises the rich and fertile lands of Africa.

Can you find these colours in the videos or in the space?
What three colours would you put on your flag?

Open Eye Gallery show artworks that use photography and film to tell people's stories both from Merseyside and all over the world.



Sandra is from Uganda and across the country people get married and celebrate in different ways. Take a closer look at Sandra's dress. What do you think it's made from? What does the writing say? What can you see in her photos?

Here you will find artworks by Sandra Suubi, David Aguacheiro and Rahima Gambo. They make work about the environment and how people from African countries have been affected by natural goods being taken and replaced with European rubbish.

This sheet gives you more information about the artists and things to think about when looking at the artworks.

Rahima likes to make visual stories. How do you like to tell stories? Who do you tell stories to?



David is from Mozambique where boats are very important to people's day-to-day lives. Boats are also important to Merseyside, where do you see them being used?



You are in The Victoria Gallery and Museum. This building was built for the University of Liverpool and designed by a Liverpoolian architect Alfred Waterhouse.

Here you will find artworks by Antonio Obá, Charmaine Watkiss and Gala Porrás-Kim. The artists in this gallery are interested in religion and beliefs, how they have changed through time and building new connections to new places you can call home.

This sheet gives you more information about the artists and things to think about when looking at the artworks.

Antonio's work is about being a hunter and being prey. By ringing the bells you alert other people to where you are.

Have a go at ringing the bells, how does the sound make you feel?

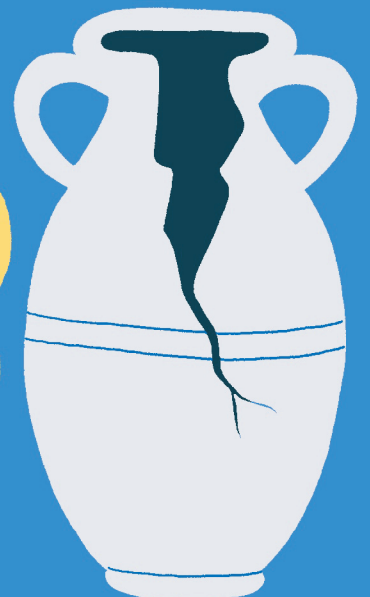
Can you think of other times sound is used to make you pay attention? What animals use sound as a way of seeing?



Charmaine thinks about the connections between Africa and the Caribbean. Can you think about other places that have links with Liverpool.

Gala thinks about how museums collect items and store them away to keep them safe.

If you started a collection for a museum, what would you collect? Why would you put it in the museum?



Tate Liverpool shows art from all over the world and aims to bring a wide range of art to the North of England. They host talks, festivals and community events to help people feel included. **This sheet gives you more information about the artists and things to think about when looking at the artworks.**

The Liverpool Biennial artworks at Tate look at the histories of the water and docks which surround the gallery. This room focuses on the work of artist Torkwase Dyson.

Torkwase imagines these huge sculptures as telling different stories at once.

What do the shapes look like to you? Can you see a gateway? A shelter? Boats?

What do you think the sculptures are made of? If we dropped them in the water do you think they would sink or float?

What other things change from a gas, to a liquid to a solid?

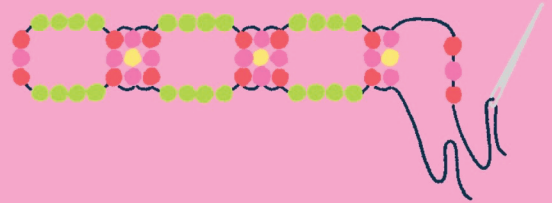


The title of the work is Liquid A Place, and

Torkwase wants you to think of dark stormy waters when you look at the work. But they also look like polished stone.



Tate Liverpool shows art from all over the world and aims to bring a wide range of art to the North of England. They host talks, festivals and community events to help people feel included. This sheet gives you more information about the artists and things to think about when looking at the artworks.



Fátima is interested in pop culture in Peru and traditional Peruvian art. Can count how many beads make up the eyes in Fátima's bead pieces.
Fátima creates beautiful decorative pieces of work, what animals and flowers can you see?



In this room you will find artworks by Fátima Rodrigo Gonzales, Edgar Calel, Nolan Oswald Dennis and Guadalupe Maravilla. These works look at the histories of the water and docks which surround the gallery.



Edgar's piece is an offering to his ancestors. Can you name any of the fruits and vegetables on display.
How do they look? Would you want to eat them?

Guadalupe was very ill and used traditional medicine from his home country El Salvador to get better.

Try to draw the path you see on the wall in Guadalupe's room with your feet on the floor.



What shapes can you see in the different pieces of work?

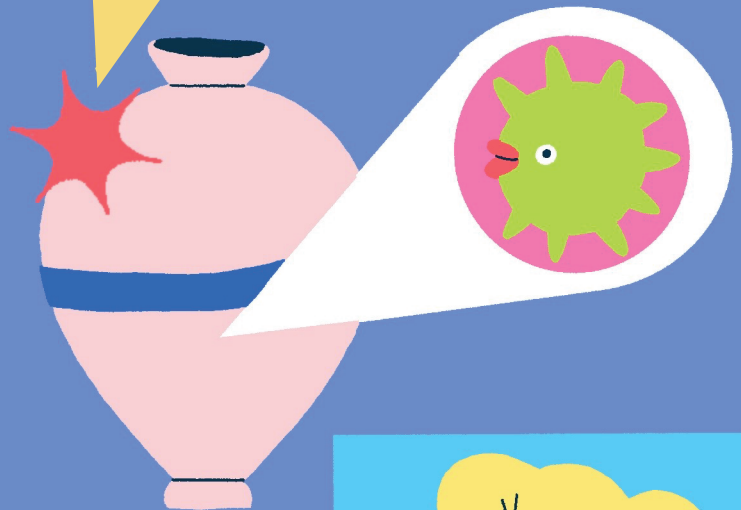
Nolan is interested in how sailors in the past used the stars to travel the globe.
Count the constellations and stars in Nolan's space.

Tate Liverpool shows art from all over the world and aims to bring a wide range of art to the North of England. They host talks, festivals and community events to help people feel included. This sheet gives you more information about the artists and things to think about when looking at the artworks.

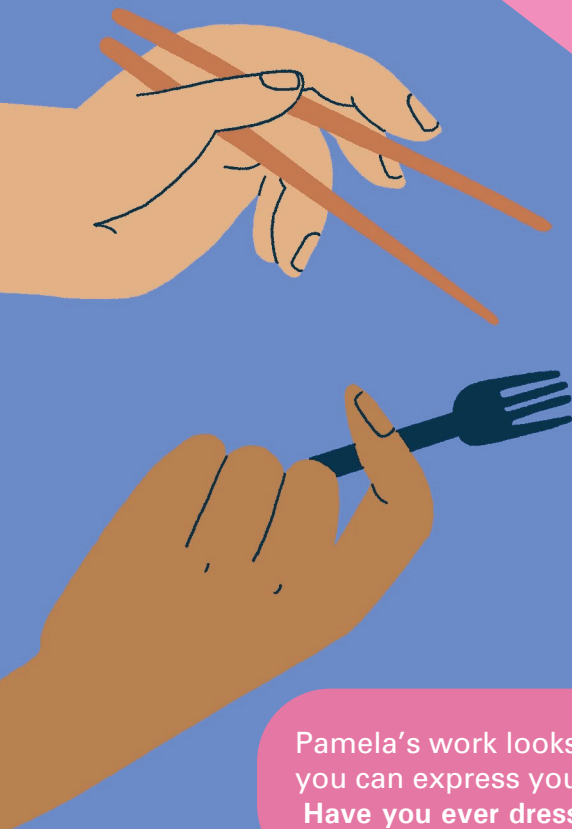


In this room you will find artworks by Isabel do Rosário, Shannon Alonzo, Francis Offman, Gala Porras- Kim, Lubaina Himid, and Pamela Phatsimo Sunstrum. These works look at the Whistories of the water and docks which surround the gallery.

Gala has grown mould from swabs taken from museums. Museums try to keep their objects as clean as possible to keep them safe.
What colours can see in the mould in Gala's work?



Francis is from Rwanda and because of war he has not been able to go home which meant he grew up in Italy.
How many books you can see in Francis' piece?



What do you think about making art from waste materials?

Have you made art from recycled objects before?

Multiple artists in this gallery have used food or drink in their work. Think of a meal or food that makes you feel good and reminds you of your community.

Pamela's work looks at community and identity and how you can express yourself with clothes.
Have you ever dressed up as someone else?



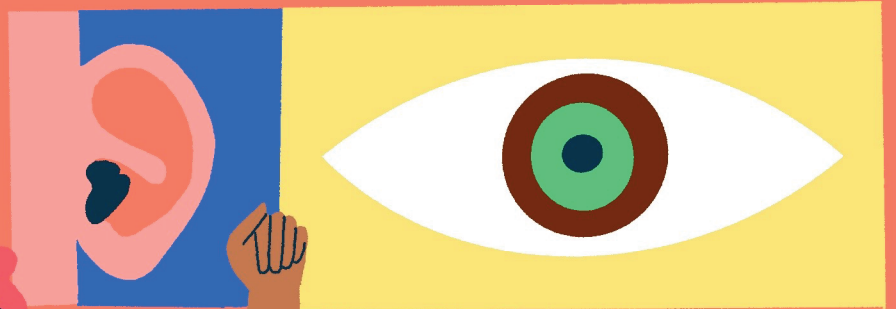
The Tobacco Warehouse is the biggest brick warehouse in the world using more than 27 million bricks. It was built to store up to 70,000 bails of tobacco, each weighing 400+kgs. This sheet gives you more information about the artists and things to think about when looking at the artworks.

In Tobacco Warehouse you will find artworks by Melanie Manchot, Isabel do Rosário, Julien Creuzet, Rahmi Hamzi, Albert Ibokwe Khoza and Binta Diaw. The artists in this venue all explore ideas of repair and healing in their artworks.



Melanie's work is about how we change our personalities around different people.

Think about a time when you have acted differently and why? Do you act differently with your friends than with your teacher?



Julien Creuzet likes to turn things he has read into art.

What do you think his artworks are trying to say?

Rahmi's work is about women's rights. Can you think of any ways women's rights have changed in the past?



iBokwe is a performer who thinks about gender and they wear elaborate pieces.

Have you ever seen objects or costumes like this?

When you are sick, what do you do to make yourself feel better?

Binta has planted seeds inside the soil of the boat to represent growth. Have a look and see if you can spot anything growing. What do plants need to grow well?

