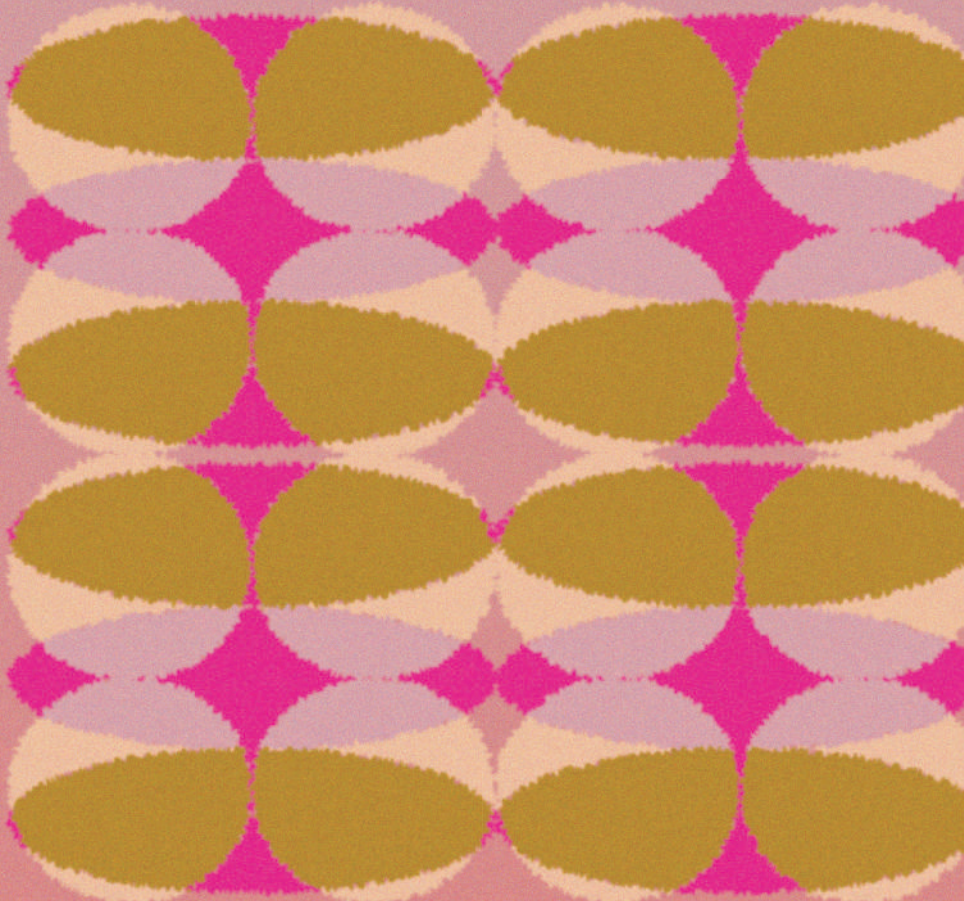


Liverpool Biennial 2025

Free Festival of Contemporary Art



BEDROCK

Visitor Guide 7 June – 14 September

Welcome

Welcome to the 13th edition of Liverpool Biennial, ‘BEDROCK’. We are delighted to bring this new festival of contemporary art to the city. During these times of global uncertainty, our curator Marie-Anne McQuay has looked to our local physical and social foundations to offer a stable base to explore the different ideas and experiences of all our artists.

I would like to thank Marie-Anne, who has combined her intimate knowledge of Liverpool, its places and people with connections made with artists across the world. I would also like to extend my gratitude to the artists who have worked with us to create this Biennial that is deeply rooted in the city.

Since being formed in 1998 Liverpool Biennial has commissioned over 400 artworks, presented work by over 590 leading artists from around the world and delivered 39 collaborative neighbourhood projects, many with long-lasting social impact. We aim to connect the best of international art and artists to Liverpool for the benefit of everybody who lives, studies, works within and visits our brilliant city. We have so far hosted over 50 million visits to the festival, which is accessible in public spaces and across our partner and ‘found’ venues.

We continue to be grateful to our cultural partners and venues who work with us across the city, generously collaborating on our programme. We would also like to thank Arts Council England, Liverpool City Council and Culture Liverpool, founding supporter James Moores, Trusts & Foundations, International Agencies and corporate supporters, as well as individuals from our Collector, Director and Commissioning Circles for their ongoing support. And of course, a huge thank you to our wonderful team for bringing this festival to life.

Finally, we believe strongly that our festival should be a Biennial for Everyone. To help us with ensuring this legacy we ask if you are able to consider supporting us with a donation - you can scan the QR code below to donate and help keep Liverpool Biennial free, for you and everyone.

I hope you will enjoy visiting this year’s Biennial and experiencing all that our programme - and Liverpool as a whole - has to offer,

Dr Samantha Lackey
Director



Welcome to Liverpool Biennial 2025, here is some information to make the most of your visit.

Liverpool’s vibrant and eclectic culture is intertwined with the city’s identity and international reputation. With one of the largest collections of museums and galleries outside of London, a thriving live performance scene and world-renowned sporting legacy, culture and heritage are at the heart of our city.

Below you will find information to help plan your visit. Further information, including in-depth travel and hospitality information, can be found at biennial.com/visit.

OPENING HOURS

All exhibitions are open Wednesday to Saturday, with public artworks open and accessible throughout the festival. Please check our website for specific opening times, as some venues do open on Mondays, Tuesdays and Sundays.

BOOKING INFORMATION

Entrance to exhibitions and events is free unless stated otherwise. Where booking is required, please visit biennial.com/events for further information.

ACCESSIBILITY

We strive to make Liverpool Biennial as accessible as possible for all visitors. All video work is captioned, our online events listings can be filtered by access requirements, and all LB2025 venues have flat access.

For a full access guide, detailing provision for all venues, head to biennial.com/access.

GETTING AROUND

Liverpool is a very walkable city, with the majority of Liverpool Biennial venues and sites located within the city centre. We encourage visitors to use public transport where possible, in line with our sustainability commitments. Head to biennial.com/visit for further information.

CONTACT US

E: info@biennial.com T: +44 (0)151 433 9156

ACCESS SYMBOLS KEY

Flat Access: Flat access and/or lifts to access upper floors.

Toilets: Toilets are available.

Accessible Toilets: Wheelchair-accessible toilet available.

Gender Neutral: Toilet not separated by gender or sex.

Hearing Loop: Hearing loop available.

Baby Changing: Baby changing facilities available.

Refreshments: There is a cafe or somewhere you can purchase refreshments.

Parking: There is car parking available at the venue.

CONNECT

biennial.com
 @liverpoolbiennial
 @liverpoolbiennial
 /liverpoolbiennial

#LB2025

Explore more of LB2025 using our free digital guide on Bloomberg Connects, the free arts and culture app:



Bloomberg Connects



Biennial Locations

EXHIBITION VENUES

1 Bluecoat
School Lane, L1 3BX

2 Eurochemist
16-20 Berry Street, L1 4JF

3 FACT Liverpool
88 Wood Street, L1 4DQ

4 Liverpool Cathedral
St James’ Mount, L1 7AZ

5 Liverpool Central Library
William Brown Street, L3 8EW

6 Open Eye Gallery
19 Mann Island, L3 1BP

7 Pine Court
1 Nelson Street, L1 5DW

8 SEVENSTORE
26 Norfolk Street, L1 0BE

9 Tate Liverpool + RIBA North
21 Mann Island, L3 1BP

10 The Black-E
1 Great George Street, L1 5EW

11 Walker Art Gallery
William Brown Street, L3 8EL

12 20 Jordan Street
L1 0BP

OUTDOOR ARTWORKS

All outdoor artworks are wheelchair accessible.

1 Alice Rekab
Liverpool ONE Sugar House Steps, South John St, L1 8BU

2 Anna Gonzalez Noguchi
Mann Island, L3 4AN

3 Isabel Nolan
St John’s Gardens
St George’s Place,
William Brown Street, L1 1JJ

4 Kara Chin
Berry Street (various locations), L1 4JF

5 Petros Moris
The Oratory at Liverpool Cathedral, St James’ Mount, L1 7AZ

PERMANENT ARTWORKS

1 Sir Antony Gormley, ‘Another Place’
Crosby Beach

2 Daniel Steegmann Mangrané, ‘La Pensée Férale’
Crown Street Park

3 Eleng Luluan, ‘Ngialibalibade – to the Lost Myth’
Princes Dock, Liverpool Waters

4 Lawrence Abu Hamdan, ‘Hummingbird Clock’
Derby Square

5 Nathan Coley, ‘From Here’
St George’s Pumping House, Mann Island

6 Sir Peter Blake, ‘Everybody Razzle Dazzle’
Pier Head, George Parade

7 Rudy Loewe, ‘The Reckoning’
Jamaica Street (corner of Jordan Street)

8 Ugo Rondinone, ‘Liverpool Mountain’
Royal Albert Dock

PARTICIPATING ARTISTS

Alice Rekab

Amber Akaunu

Amy Claire Mills

Ana Navas

Anna Gonzalez Noguchi

Antonio Jose Guzman & Iva Jankovic

Cevdet Erek

ChihChung Chang 張致中

Christine Sun Kim

DARCH

Dawit L. Petros

Elizabeth Price

Fred Wilson

Hadassa Ngamba

Imayna Caceres

Isabel Nolan

Jennifer Tee

Kara Chin

Karen Tam 譚嘉文

Katarzyna Perlak

Leasho Johnson

Linda Lamignan

Maria Loizidou

Mounira Al Solh

Nandan Ghiya

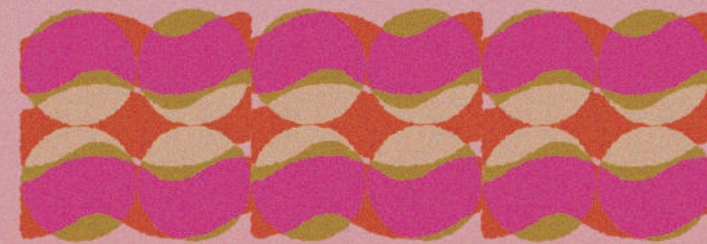
Nour Bishouty

Odur Ronald

Petros Moris

Sheila Hicks

Widline Cadet



Liverpool Biennial is the UK’s largest free festival of contemporary art, taking place every 2 years, over 14 weeks across the city in public spaces, galleries, museums and online. The Biennial commissions artists from the UK and around the world to make and present work in the context of Liverpool.

The 13th edition of the festival, ‘BEDROCK’, curated by Marie-Anne McQuay, draws on Liverpool’s distinctive geography and the beliefs which underpin the city.

It is inspired by the sandstone which spans the city region and is found in its imposing architecture. ‘BEDROCK’ also acts as a metaphor for the unique social foundations of Liverpool, haunted by empire, and the people, places and values that ground us.

Venues & Artists

BLUECOAT

8 School Lane, L1 3BX
Open Tuesday - Sunday
11am - 5pm



Artists at this venue:

ALICE REKAB
AMBER AKAUNU
AMY CLAIRE MILLS
CHIHCHUNG CHANG 張致中
ODUR RONALD
PETROS MORIS

The artists at Bluecoat all bring insights into the family, chosen family and cultural heritage that they carry with them, and which grounds them.

LIVERPOOL CATHEDRAL

St James' Mount, L1 7AZ
Open Monday - Sunday
10am - 6pm



Artists at this venue:

ANA NAVAS
MARIA LOIZIDOU

Liverpool Cathedral – a monumental sandstone building set in a quarry which reveals the bedrock of the city – hosts two artists who explore the venue as a place of sanctuary, and one in which women’s contributions to the city are celebrated.

FACT LIVERPOOL

88 Wood Street, L1 4DQ
Open Wednesday - Sunday
11am - 6pm



Artists at this venue:

DARCH*
KARA CHIN
LINDA LAMIGNAN

The artists at FACT Liverpool explore both healing and extractive relationships with the environment, connecting their research to the urban and natural environments of the city and localised and global histories of colonial trade.

**DARCH will also be showing work at Crosby Library, in collaboration with At The Library.*

LIVERPOOL CENTRAL LIBRARY

William Brown St, L3 8EW
Open Monday - Friday 11am - 5pm,
Saturday 9am - 5pm



Artists at this venue:

DAWIT L. PETROS

In the Hornby Library, Dawit L. Petros presents a sprawling research project that aims to re-read a historic military expedition to the River Nile from 1884-1885 – a British-led expedition which included 379 Voyageurs from across Canada and Quebec including French Canadians, Western Canadians and First Nations.

OPEN EYE GALLEY

19 Mann Island, L3 1BP
Open Tuesday - Sunday
10am - 5pm



Artists at this venue:

KATARZYNA PERLAK
NANDAN GHIYA
WIDLINE CADET

The artists at Open Eye Gallery work with lens-based media and sculpture to conjure places that speak to their sense of identity. All three artists are reinterpreting stories, myths, lost traditions and memories to form new ones.

TATE LIVERPOOL + RIBA NORTH

21 Mann Island, L3 1BP
Open Monday - Sunday
10am - 5.50pm



Artists at this venue:

ANTONIO JOSE GUZMAN & IVA JANKOVIC
CEVDET EREK
CHRISTINE SUN KIM
DAWIT L. PETROS
FRED WILSON
HADASSA NGAMBA
MOUNIRA AL SOLH
SHEILA HICKS

The artists at Tate Liverpool + RIBA North map the grounding relationships and places that they carry with them, which include intimate familial and chosen family connections, and the idea of homeland as a place of both comfort and loss.

PINE COURT

1 Nelson St, L1 5DW
Open Tuesday - Sunday
10am - 5pm



Artists at this venue:

KAREN TAM 譚嘉文
CHIHCHUNG CHANG 張致中

Liverpool Biennial 2025 marks the return of the festival to Chinatown, at a point when the area is celebrating the past and looking ahead to the future. Both artists at Pine Court explore the construction of East and Southeast Asian identity within Western contexts.

THE BLACK-E

1 Great George St, Liverpool L1 5EW
Open Wednesday - Sunday
10am - 6pm



Artists at this venue:

ELIZABETH PRICE

At The Black-E, Liverpool's pioneering arts and community centre, a major single channel film by Turner-Prize winning artist Elizabeth Price, supported by RIBA (Royal Institute of British Architects), which centres on the architectural history of Catholic Modernist churches in post-war Britain. The artist considers how their particular architecture manifests traces of trauma and anxieties of the time, whilst also telling a story of 20th century migration.

WALKER ART GALLERY

William Brown St, L3 8EL
Open Tuesday - Sunday
10am - 5pm



Artists at this venue:

ANTONIO JOSE GUZMAN & IVA JANKOVIC
CEVDET EREK
ISABEL NOLAN
JENNIFER TEE
KAREN TAM 譚嘉文
KATARZYNA PERLAK
LEASHO JOHNSON
NOUR BISHOUTY
PETROS MORIS

The artists at Walker Art Gallery offer densely material works which interweave practices exploring personal and colonial legacies within an ornate building and national collection founded on the merchant wealth of the city.

20 JORDAN STREET

L1 0BP
Open Wednesday - Sunday
10am - 6pm



Artists at this venue:

CEVDET EREK
IMAYNA CACERES

At 20 Jordan Street, the artists explore foundational references from the city including football stadia and naturally occurring materials such as plants and clay.

Further works are exhibited on streets, shop fronts, hoardings and in other unexpected places:

Eurochemist, Berry Street
ANNA GONZALEZ-NOGUCHI

Berry Street
KARA CHIN

Sevenstore, Norfolk Street
ODUR RONALD

OUTDOOR ARTWORKS

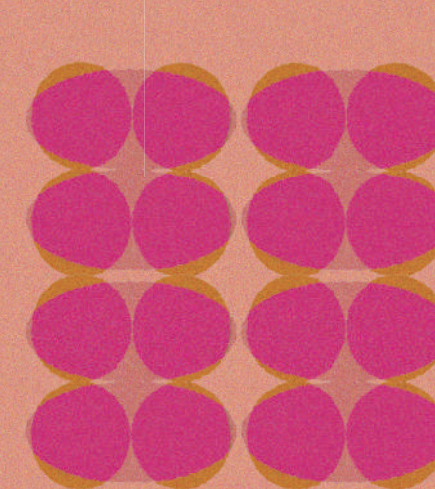
Celebrating Liverpool's iconic architecture and public spaces, a series of outdoor sculptures and installations has been commissioned for various locations across the city:

Liverpool ONE, Sugar House Steps
ALICE REKAB

Mann Island
ANNA GONZALEZ NOGUCHI

St John's Gardens
ISABEL NOLAN

The Oratory at Liverpool Cathedral
PETROS MORIS



Events Programme

A rich programme of events will take place across the 14-week festival, comprising artist talks, walking tours, practical workshops, professional development opportunities and performances.

Taking place in three stages, the programme will explore the theme of Liverpool Biennial 2025 through three distinct strands, mirroring the multiple layers of meaning that can be applied to the word ‘bedrock’. For full listings and booking information visit biennial.com/events.

LEARN WITH LIVERPOOL BIENNIAL

For families, a storybook, designed with input from attendees to Liverpool Biennial's family days helps children and young people explore ‘BEDROCK’. Workshops inspired by biennial projects will also take place throughout the summer holidays. For schools and the wider community, a selection of resources developed with teachers across the city are available to download online.

Head to biennial.com/learning to find out more.

ART AGAINST THE WORLD PODCAST

2025 marks the return of the ‘Art Against the World’ podcast, a six-part sonic experience exploring the layers of this year's Biennial: Liverpool's spirited communities, haunting legacies, and fascinating geologies.

Featuring artists, curators and writers, each episode sheds light on selected artworks. The podcast is presented by BBC New Generation Thinker **Vid Simoniti** and produced in collaboration with **University of Liverpool**.

Scan the QR code to listen.



Around The City

Alongside Liverpool Biennial, there are several exciting events and exhibitions happening around the city this Summer. All information correct at the time of printing.

FESTIVALS

City-wide	Independents Biennial	7 Jun – 14 Sept
City-wide	Liverpool Arab Arts Festival	11 – 20 Jul
City-wide	British Science Festival	10 – 14 Sept

EXHIBITIONS

Bluecoat	Independents Biennial Archive Exhibition	7 Jun – 14 Sept
FACT Liverpool	Amartey Golding	until 10 Aug
FACT Liverpool	Studio/Lab Exhibition	28 Aug- 16 Nov
Museum of Liverpool	The Holly Johnson Story	until 27 Jul
Tate Liverpool + RIBA North	Where the Work Begins	7 Jun – 25 Aug
Walker Art Gallery	Graham Crowley: I paint shadows	until 13 Jul
Walker Art Gallery	John Moores Painting Prize 2025	6 Sept – 1 Mar 2026
World Museum	Bees: A Story of Survival	until 28 Sept

Principal Funders



Venue Partners and Co-Commissioners



Delivery Partners



International Agencies



Trusts and Foundations



Corporate and Hospitality Supporters



Commissioning Circle

Catherine Petitgas

Directors Circle

Suling Mead

Mercedes Vilardell

Gallery Circle

Tiwani Contemporary

Collector's Circle

Sigrún Davíðsdóttir

Simon Edwards

Mark Fletcher

Jon Sharples

Bina von Stauffenberg

Cathryn Wright